



PCM

£2,300 PCM

Candle Street

London, E1 4RT

Located along Regents Canal within a modern development is this 2 bedroom ground floor apartment close to Stepney Green Station.

The property features a bright and spacious reception room with floor to ceiling windows leading onto a Juliet balcony. There is a modern semi open plan kitchen, family bathroom, 2 good size double bedrooms and a en-suite to the master bedroom.

Located just a short walk from Limehouse DLR with Stepney Green, Whitechapel and Mile End Stations also close by.

The property comes with the added bonus of a secure underground parking space.

Inclusive on internet

5 weeks deposit: £2076.92

Council Tax: Band D

Available: now

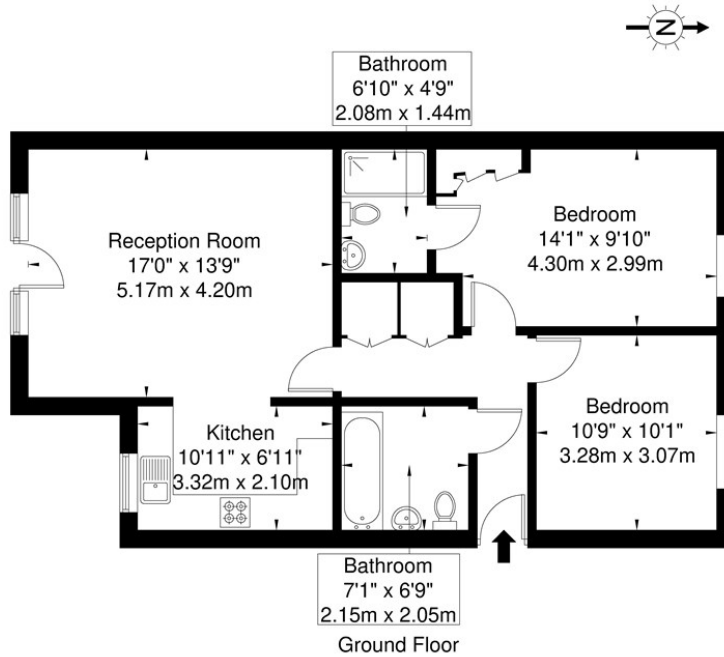
12 months contract: breakclause subject to offer





Gray Court, Gray Ct, Candle St, E1 4RT

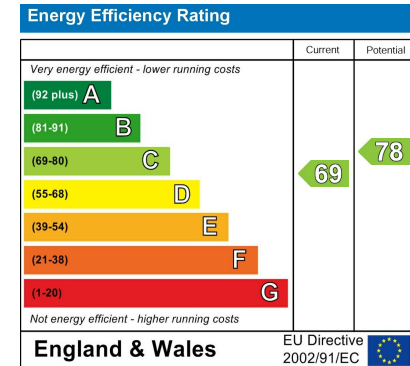
Approx. Gross Internal Area = 78.1 sq m / 840 sq ft



Ref

Copyright **BLEU PLAN**

Disclaimer : Floor plan measurements are approximate and are for illustrative purposes only. While we do not doubt the floor plan accuracy and completeness, you or your advisors should conduct a careful, independent investigation of the property in respect of monetary valuation.



Agents Note: Whilst every care has been taken to prepare these particulars, they are for guidance purposes only. All measurements are approximate and are for general guidance purposes only and whilst every care has been taken to ensure their accuracy, they should not be relied upon and potential buyers/tenants are advised to recheck the measurements

OFFICE ADDRESS
88 Cheshire Street
London
E2 6EH

OFFICE DETAILS
0207 739 6969
info@peachproperties.com
www.peachproperties.com